

TOP 15 Most Popular Spots in Kyoto

1 Kiyomizu Temple



One of the oldest Buddhist temples. Most visited tourist spot. Near Yasaka Shrine. Near Chion In. Near Gion district. Near historic streets.

Transportation: 9min on taxi, 43min by foot, 22-40min on bus (№80, 82, 206, 207)

2 Fushimi Inari Shrine



1000 gates. The most picturesque spot in Kyoto. Near Tofukuji temple (famous during the Fall). Go early in the morning or late afternoon.

Transportation: 15min on taxi, 60min by foot, 40min on bus (№75 --> Nara Line), 26min on train (Nara Line --> San-In Line)

3 Kinkakuji Temple



Golden pavilion. Picturesque view but not much to do nearby.

Transportation: 19min on taxi, 1:18h by foot, 40min on bus (№12, 206)

4 Nijo Castle



Historic castle with nightingale floors. Closes early.

Transportation: 8min on taxi, 28min by foot, 18min on bus №9; 8:45AM-5:00PM

5 Kyoto Samurai & Ninja Museum



Guided tour of Japan's history, free samurai experience and free ninja experience.

Transportation: 9min on taxi, 29min by foot, 18-24min on bus (№11, 12, 203, 207, 46, 32) 10:00AM-9:00PM

Show this map and get ¥500 OFF

6 Imperial Palace



The residence of the emperor until the Meiji period.

Transportation: 10min on taxi, 49min by foot, 29-34 min on bus (№9, 50), 30min on train (Karasuma Line)

7 Nishiki Market



One of the most well known flea markets. Great for food lovers.

Transportation: 9min on taxi, 27min by foot, 17min on bus (№207, 32), 23min on train (Hankyu-Kyoto Line) 9:30AM-6:00PM

8 Ginkakuji Temple



Birthplace of the Japanese cultural traditions.

Transportation: 21min on taxi, 1:25min by foot, 39-51min on bus (№5, 32, 203)

9 Kimono & Tea Ceremony Maikoya



Best rated tea ceremony experience in Japan. Kimono wearing experience.

Transportation: 10min on taxi, 37min by foot, 16-22min on bus (№3, 32); 10:00AM-7:00AM

Show this map and get ¥500 OFF

10 Teramachi shopping arcade

Many souvenir shops and specialty stores.

Transportation: 10min on taxi, 33min by foot, 19min on bus (№32); 10:00AM-00:00AM

11 Sanjusangendo

Many wooden statues of giant Goddesses.

Transportation: 8min on taxi, 36min by foot, 21-29min on bus (№82, 206, 207)

12 Philosopher's Walk

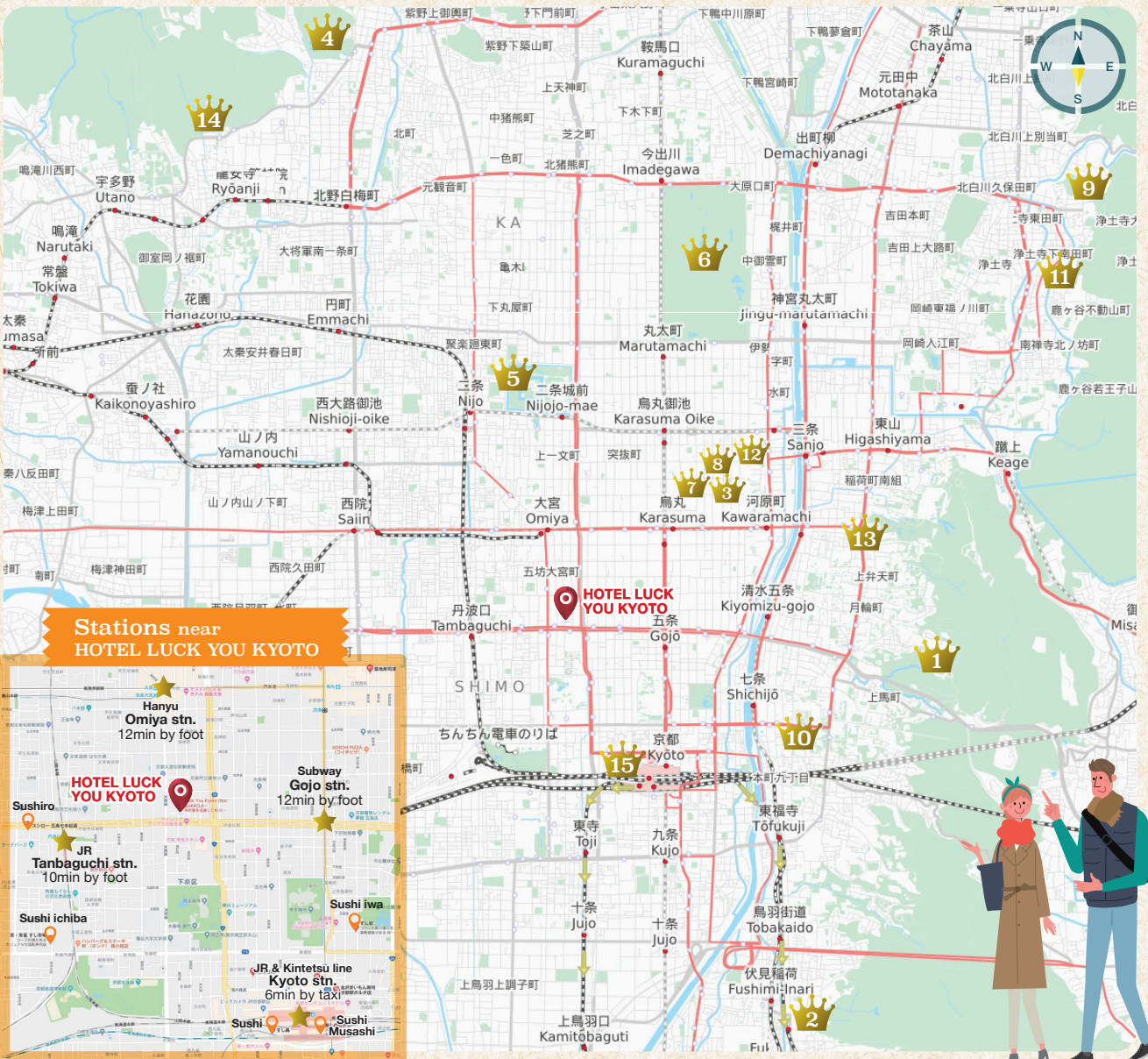
A beautiful path near a small creek. Near the zoo, near Eikando Zenrinji.

Transportation: 19min on taxi, 1:13h by foot, 32-43min on bus (№32, 203)

13 Gion District

Traditional geisha district. You can see a real geisha at 5:45 in front of Ichiriki Chaya or 7:50 in front of the Gion Corner

Transportation: 10min on taxi, 34min by foot, 22-28min on bus (№46, 80, 82, 207)



Stations near HOTEL LUCK YOU KYOTO

Hanyu Omiya stn. 12min by foot

Subway Gojo stn. 12min by foot

JR Tanbaguchi stn. 10min by foot

Sushi ichiba

Sushi iwa

JR & Kintetsu line Kyoto stn. 6min by taxi

Sushi Musashi

Sushi

Sushi

Sushi

Sushi

Sushi

Sushi

Sushi

Sushi

Sushi

Sushi

Sushi

Sushi

Sushi

Sushi

Sushi

Sushi

Sushi

Sushi

Sushi

Sushi

Sushi

Sushi

Sushi

Sushi

Sushi

Sushi

Sushi

Sushi

Sushi

Sushi

Sushi

Sushi

Sushi

Sushi

Sushi

Sushi

Sushi

Sushi

Sushi

Sushi

Sushi

Sushi

Sushi

Sushi

Sushi

Sushi

Sushi

Sushi

Sushi

Sushi

Sushi

Sushi

Sushi

Sushi

Sushi

Sushi

Sushi

Sushi

Sushi

Sushi

Sushi

Sushi

Sushi

Sushi

Sushi

Sushi

Sushi

Sushi

Sushi

Sushi

Sushi

Sushi

Sushi

Sushi

Sushi

Sushi

Sushi

Sushi

Sushi

Sushi

Sushi

Sushi

Sushi

Sushi

Sushi

Sushi

Sushi

Sushi

Sushi

Sushi

Sushi

Sushi

Sushi

Sushi

Sushi

Sushi

Sushi

Sushi

Sushi

Sushi

Sushi

Sushi

Sushi

Sushi

Sushi

Sushi

Sushi

Sushi

Sushi

Sushi

Sushi

Sushi

Sushi

Sushi

Sushi



京町家 楽遊 堀川五条 HOTEL LUCK YOU KYOTO

〒600-8357 京都府京都市下京区柿本町
黒門通五条上ル 590-16

Kuromontorigojoagaru 590-16, Kakimotocho, Shimogyo-ku, Kyoto-city, Kyoto 600-8357

+81 75-366-3211

luck-you@asia-is.com

Don't forget to review us on TripAdvisor!!

tripadvisor

Luck You Kyoto

All results

Hotels

Vac